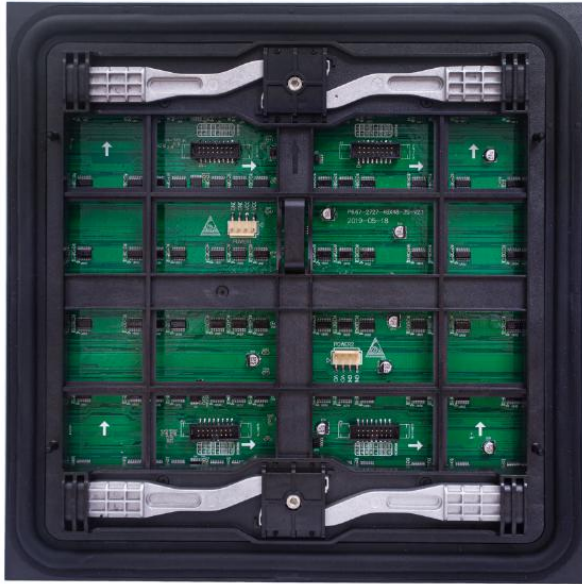
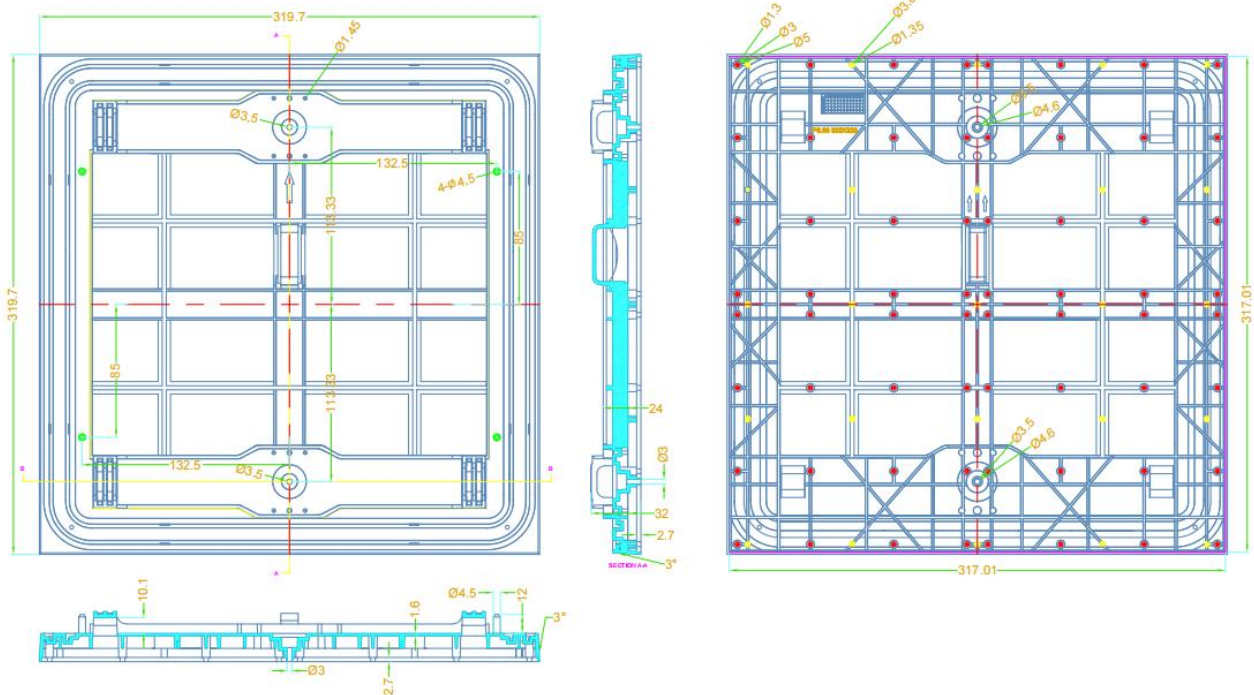


P6.67-3S Outdoor



Hole Position of P6.67



Technical Specifications:

Module

Pixel Pitch	6.67mm
LED Configuration	SMD2727
Module Size	320(W) × 320(H)
Module Resolution	48*48=2304 Dots
Driving Method	Constant Current Drive 3S
Pixel Density	24788 Dots/m ²
Drive Type	MBI5124GP
PCB Thickness	1.6mm
Refresh Rate	1920HZ
Brightness	≥7500cd/m ²
Signal Pin	HUB75
IP Rating(Front/Rear)	IP65/54
Module weight	1.3Kg
Life Span	≥ 100,000 hours

Optical

Color Temperature	2,000K—9,300K adjustable
Viewing Angle	Horizontal 160°, vertical 160°
Brightness Uniformity	≥ 95%
Contrast Ratio	≥5000 : 1

Processing Performance

Brightness Control	256-Grade Manual/Automatic
Frame Frequency	60 Hz
Grey Level	65,536
Processing Depth	14-16bits (RGB each)
Video Support	Full HD、Ultra HD、SHV

Power Supply

Power Voltage	100-240 VAC±15%
Max. Consumption	1300 W/m ²
Average Consumption	390 W/m ²

Working Environment

Operating Temperature	-20℃~+50℃
Storage Temperature	-20℃~+55℃
Operating Humidity	10~90%RH